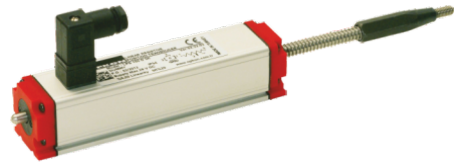


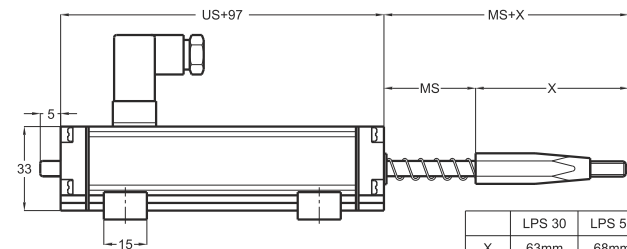
## Linear Potentiometer Spring Return

- Measuring range 30 - 150 mm
- Long mechanical life 100 million cycles
- Excellent repeatability <0.01 mm
- Infinite resolution
- 5 KOhm or 10 KOhm

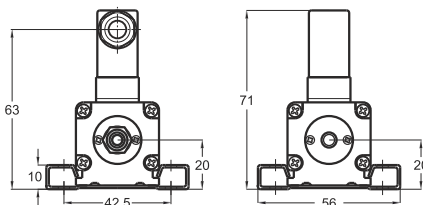
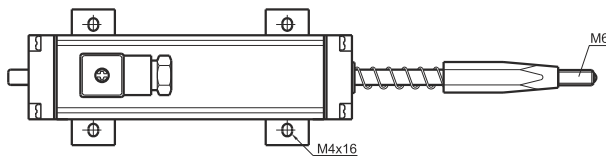
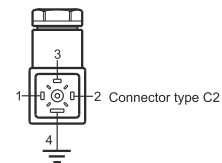


### Technical specifications

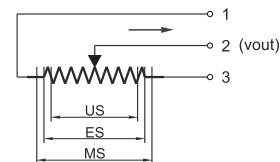
Measurement stroke	30 to 150 mm
Linearity	± %0,05
Repeatability	< 0,01 mm
Resolution	Infinite
Resistance	5 KOhm or 10 KOhm
Resistance tolerance	± %20
Load resistance	100 KOhm min.
Recommended cursor current	<1 µA
Permissible applied voltage	28 VDC max.
Electrical connections	4 pin connector
Displacement speed	< 5 m/s
Mechanical life	100 million cycles
Case dimensions	33 mm x 33 mm
Case material	Anodized aluminium
Rod material	Stainless steel
Rod diameter	Ø6 mm
Mechanical fixing	Variable brackets
IP degree	IP 54
Operating temperature	-20°C ... +80°C
Storage temperature	-30°C ... +90°C



	LPS 30	LPS 50	LPS 75	LPS 100
X	63mm	68mm	78mm	88mm



LPS(mm)	30	50	75	100	150
US (Usefull Stroke)	30	50	75	100	150
MS (Mechanical Stroke)	34	54	79	104	154
L (Total Length)	232	277	337	397	447



Model	Measurement stroke (mm)	Linearity (%)	Resistance (KOhm)	Connector / Cable
(example) LPS	125	D	5K	C2
LPS	30 ... 150 mm	D : ± %0,05 (standard)	5K : 5 KOhm 10K : 10 KOhm	C2 : 4 pin connector